

# MX, MXV AND MXX PORTABLE ELECTRIC JACKS

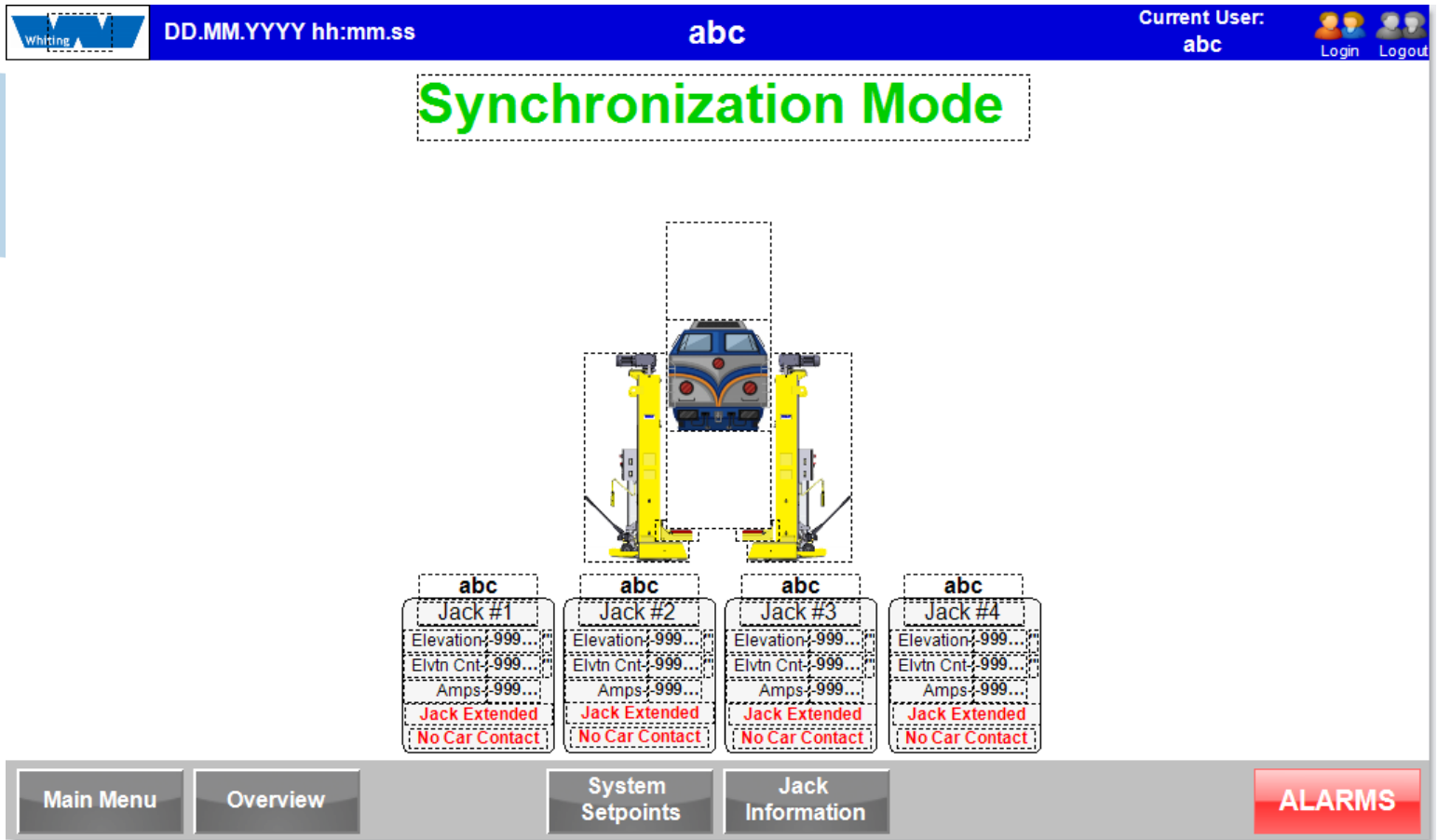
## FEATURES

- UL 508 Listed at 65kA SCCR
- VFD controlled with regen control
- Maximum deviation in elevation from lift point of .25" in fault condition
- Typical deviation in elevation from lift point during operation of < 0.1"
- Offered in configurations of 4 to 12 with any 2-12 able to be synchronized
- Synchronization up to 12 jacks so users can lift single transit vehicles, married pairs or entire consists
- Each set of jacks contains 1 master jack capable of controlling up to 12 jacks in synchronous configuration
- Single power feed for each set of 4 jacks
- Detailed event and alarm logging functions
- HMI contains all documentation, OMM, VFD manual, & wiring schematics; all viewable via a pdf application that displays over the control screen
- Wireless remote as a standard (for synchronized operation)
- 24 volt DC control voltage for improved safety

## APPLICATIONS

Whiting Portable Electric Jacks are a proven name in rail car vehicle maintenance. Whether its freight, transit, or commuter railroad, they all trust portable electric jacks from Whiting Corp to raise and lower their rail cars. The jack's rugged design handles the toughest conditions with minimal maintenance. Plus there are a variety of different jacking pad locations and weights to meet the large variety of vehicle designs in the industry. Whiting jacks are easy to maneuver for locating under the lifting pad and are engineered to support a quick turnaround for maintenance and then getting the car back on track.

# TYPICAL OVERVIEW SCREEN (SET OF 4 JACKS)



## CONFIGURATIONS

| MODEL | CAPACITY (TONS) | HP | SPEED (IN/MIN) | EFF. LIFT. | MIN BRACKET HEIGHT | SCREW DIA. | HEIGHT      | WIDTH  | LENGTH     | WEIGHT (LBS) |
|-------|-----------------|----|----------------|------------|--------------------|------------|-------------|--------|------------|--------------|
| MX    | 10              | 2  | 12             | 5'-11"     | 13 1/16"           | 2.5        | 10' 7 7/8"  | 3'-10" | 3' 11 1/2" | 3100         |
| MXV   | 15              | 3  | 12             | 5'-11"     | 13.5               | 3          | 10' 8 3/16" | 3'-10" | 3' 11 1/2" | 3200         |
| MXX   | 20              | 5  | 12             | 5'-11"     | 13.5               | 3          | 10' 8 3/16" | 3'-10" | 3' 11 1/2" | 3300         |

Whiting Corporation - Keeping Industry on the Move



[YOUTUBE.COM/USER/WHITINGCORP](https://www.youtube.com/user/whitingcorp)



[FACEBOOK.COM/WHITINGCORPORATION](https://www.facebook.com/whitingcorporation)



[LINKEDIN.COM/COMPANY/WHITING-CORPORATION](https://www.linkedin.com/company/whiting-corporation)

PHONE: (800) 861-5744

[WWW.WHITINGCORP.COM](https://www.whitingcorp.com)

[SALES@WHITINGCORP.COM](mailto:SALES@WHITINGCORP.COM)