



DROP TABLES



SPECIALIZED DESIGN • STEEL COLUMN ASSEMBLY

EXPERIENCE

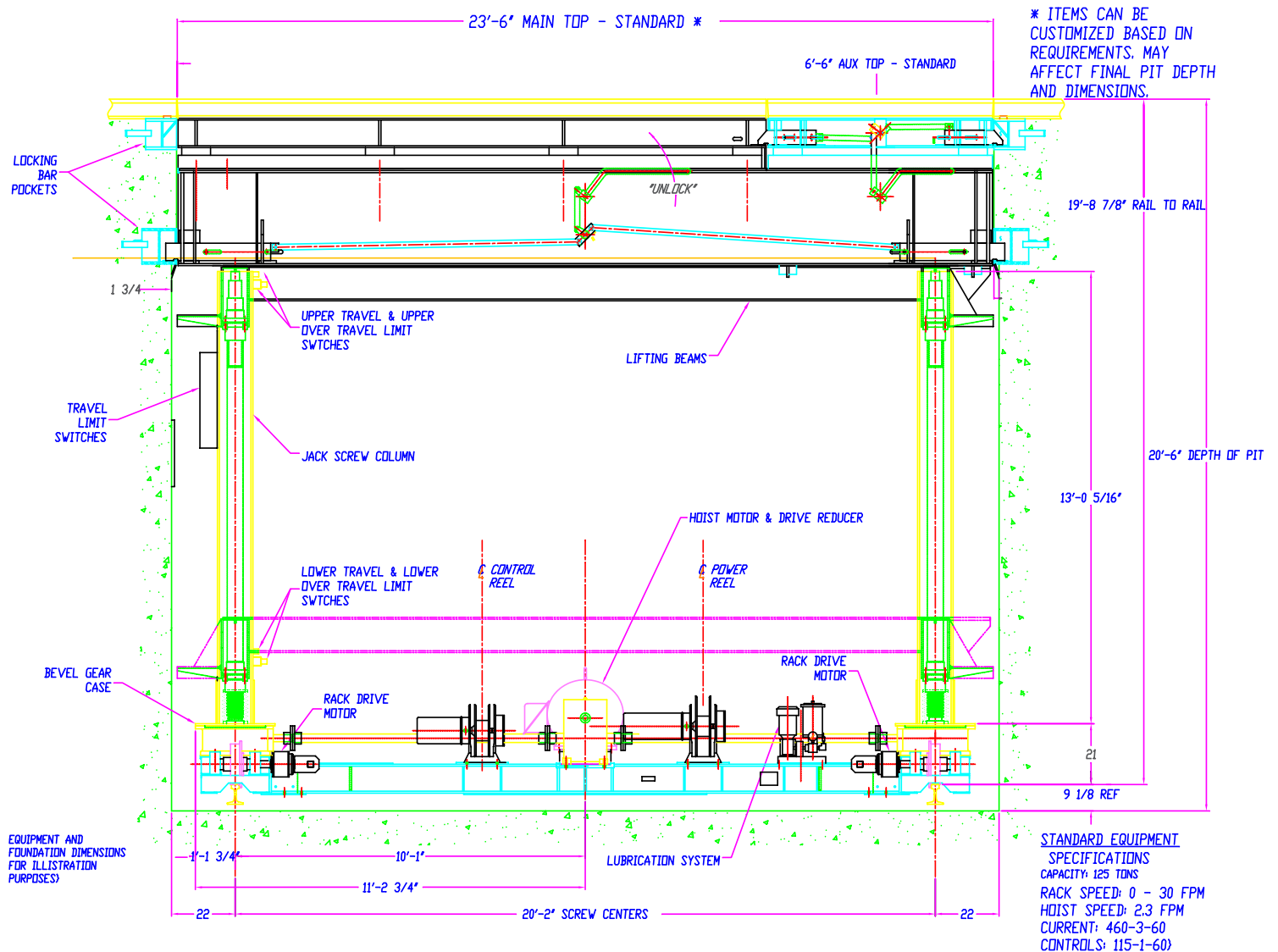
Whiting Corporation has been instrumental in the development of the Drop Table concept and is responsible for many of the added values and practical features found in today's modern systems.

In collaboration with major railroads, Whiting has designed and developed Drop Table mechanisms that can be found in almost any major heavy locomotive repair shop throughout the country... and the world.



To remove drive wheels or trucks with a Drop Table, the locomotive is located and supported over the table top, where the trucks are disconnected, lowered, transferred laterally and raised to a release track. The trucks can then be moved to a maintenance area where inspection and repair can be performed quickly and efficiently.

POWER LIFTING & LOWERING • INTERLOCK CONTROLS



STANDARDIZED COMPONENTS

Standardized components are incorporated into our unique design which lowers the original cost and impacts favorably on future repair costs.

ADAPTABLE DESIGNS

Drop Table designs are adaptable to satisfy almost any service requirement. Installations now serve pits from 4 feet to 26 feet in width; capacities range from 20 to 250 tons.

LOCKING DRIVE SCREWS

"Self-locking" buttress screws that remain stationary in the event of a drive mechanism malfunction... regardless of table load.

REMOTE OPERATED CONTROLS

Each Whiting design features remote operation, no need for personnel to be on or near the Drop Table while it is in use.

WHITING provides both standard and custom equipment for railroads, mass transit systems, car and locomotive builders, car repair shops and industrial rail applications, including:

Drop Tables

Car Hoists

Body Stands

Portable Electric Jacks

Turntables

Locomotive Sanding Systems

Car Progression Systems

Ripjack Railcar Jacking Assemblies

Transfer Tables

Overhead and Gantry Cranes

A Leading Supplier of Maintenance
Equipment to Railroads of the World



26000 S. Whiting Way
Monee, IL 60449
Phone: (708) 587-2000
Fax: (708) 587-2001
www.whitingcorp.com



**AMERICAN-OWNED
AMERICAN-MADE**